

Perfecter

FUSION STYLER™

Owner's Manual & Styling Guide



CG CALISTA
TOOLS™
NOURISH & STRENGTHEN WITH STYLE



Important Safety Instructions

When using electrical appliances, especially when children are present, basic safety precautions should always be followed, including the following:

READ ALL INSTRUCTIONS BEFORE USING. KEEP AWAY FROM WATER.

DANGER – As with most electrical appliances, electrical parts are electrically live even when the switch is in the “OFF” Position.


TO REDUCE THE RISK OF SERIOUS INJURY BY ELECTRIC SHOCK;

1. Always unplug the appliance immediately after using.
2. Do not use while bathing.
3. Do not place or store appliance where it can fall or be pulled into a tub or sink.
4. Do not place in or drop into water or other liquid.
5. If appliance falls into water, unplug it immediately. Do not reach into the water.

WARNING – To reduce the risk of burns, electrocution, fire, or injury to persons:

1. An appliance should never be left unattended when plugged in.
2. Close supervision is necessary when this appliance is used by, on, or near children or individuals with certain disabilities.
3. Use this appliance only for its intended use as described in this manual. Do not use attachments not recommended by the manufacturer.
4. Never operate this appliance if it has a damaged cord or plug, if it is not working properly, or if it has been dropped, damaged, or dropped into water.
5. Keep the cord away from heated surfaces. Do not wrap the cord around the appliance.
6. Do not use an extension cord with this appliance.
7. The Perfecter is hot when in use. Do not let eyes and bare skin touch heated surfaces.
8. Do not use the appliance with any voltage converter.
9. Do not use this appliance near bathtubs, showers, basins or other vessels containing water.
10. Never use while sleeping.
11. Do not use outdoors or operate where aerosol (spray) products are being used or where oxygen is being administered.
12. Do not place this appliance directly on any surface while it is hot or plugged in.

Important Safeguard

1. The appliance is not intended for use by person (including children) with reduced physical, sensory or mental capabilities, or lack of experience and knowledge, unless they have been given supervision or instruction concerning use of appliance by a person responsible for their safety.
2. Children should be supervised to ensure that they do not play with the appliance.
3. If the supply cord is damaged, it must be replaced by manufacturer, its service agent or similarly qualified persons in order to avoid a hazard.
4.  **WARNING:** Do not use this appliance near water. Do not use this appliance near bathtubs, showers, basins or other vessels containing water.

SAVE THESE INSTRUCTIONS



SERVICING OF DOUBLE-INSULATED APPLIANCES

In a double-insulated appliance, two systems of insulation are provided instead of grounding. No grounding means is provided on a double-insulated appliance, nor should a means for grounding be added to the appliance. Servicing a double-insulated appliance requires extreme care and knowledge of the system, and should be done only by qualified service personnel. Replacement parts for a double-insulated appliance must be identical to the parts they replace. A double-insulated appliance is marked with the words "DOUBLE INSULATION" or "DOUBLE INSULATED". The symbol (square within a square) may also be marked on the appliance.

This appliance has a polarized plug (one blade is wider than the other). As a safety feature, this plug will fit in a polarized outlet only one way. If the plug does not fit fully in the outlet, reverse the plug. If it still does not fit, contact a qualified electrician. Do not attempt to defeat this safety feature.

Perfecter

FUSION STYLER™

“Ion Ceramic Technology” is used for added smoothness, shine and body. The spaces between the nylon pins are precisely calculated not to tangle hair. Not only does this product style hair easily, but it also adds shine and softness to hair that you cannot create with blow-dryers and hair ions.



About Maria



Calista founder, Maria McCool, with her 30 years experience as a stylist, has gained extraordinary knowledge traveling the world in the beauty industry. She hand-selects rare product ingredients, innovative delivery components and designs inventive styling tools that outperform others, making it easy for you to achieve salon style at home. Maria is committed to your self-confidence in the way you look and feel about yourself.

Basic Directions

1. Plug in the Perfecter.

2. Turn the main switch on, and adjust the temperature setting for your preference.

NOTE: 356°F temperature setting is recommended for thin hair and/or damaged hair. Start using once the pilot lamp stays on (lamp blinks until set temperature is reached).

It will take about 2-3 minutes to reach 356°F.

3. Use on dry hair only.

4. Simply brush entire hairstyle underneath and on top, to achieve a smoother, shinier and softer style.

OR

Section and roll each area as you would with a round brush and blow dryer to create maximum fullness, body and bounce.

Main Switch/Pilot Lamp

PILOT LAMP

The red lamp indicates the Perfecter is turned on for either 356°F or 392°F.

The blinking lamp indicates the temperature has not reached the set temperature. (When the temperature is adjusted from 356°F to 392°F, the lamp will blink until set temperature is reached.)

Stand By – Lamp BLINKING	It may take some time for the pilot lamp and barrel surface to be adjusted when changing temperature settings.
Ready to Use – Lamp ON	

MAIN SWITCH

Use the switch when turning on/off, and adjusting temperatures.

OFF — Turns off

- — 356°F (Switch ON)
- — 392°F (Switch ON)

For sensitive and over processed hair, use 356°F temperature setting.

For Safety	After use, turn the main switch off and unplug.
------------	---

NOTE: Automatic 1-Hour Shut Off function is installed for safety.

Curling

Follow the “Basic Direction,” and start brushing hair from underneath slowly, then rotate the Perfecter once to roll the hair ends.



TIP:

Take a section and start rolling hair in the mid area. Then slide the brush towards the end slowly to create rounded body and bounce.

Adding Volume to the Top

Follow the “Basic Direction”, and apply the Perfecter at the roots of the top section where additional volume is desired.



TIP:

For extra hold, use Calista Tools Complete Setting Spray to each section before using Perfecter.

Applying the other hand to hold hair makes the process easier.

Adding Volume and Movement to Bangs

Follow the “Basic Direction”, and slide the Perfecter from underneath or on top of your section.



TIP:

Slide the Perfecter forward, and slide towards the end slowly.

For moving bangs to the sides...



TIP:

Hold the Perfecter vertically, and roll and slide hair towards the back of the head.

Applying the other hand to hold hair makes the process easier.

Care

BE SURE TO UNPLUG THE PERFECTER
AND CARE AFTER IT COOLS DOWN.

- Do not rinse with water. It may damage the Perfecter.
- For cleaning the surface, wipe with a cloth dampened with water mixed with mild soap. Do not use products that include benzine and/or paint thinner.
It may damage the Perfecter.
- For cleaning the barrel, use cotton swabs.
NOTE: Be cautious not to leave the cotton fibers on the barrel.
- Clean often to avoid collecting dust and hair.

Caution When Storing

BE SURE TO CHECK THE FOLLOWING
BEFORE USING THE PERFECTER.

1. Turn the main switch off, and unplug.
2. Be sure barrel has cooled off.
3. Do not wrap cord around the Perfecter.

Perfecter
FUSION STYLER™

Get Real Salon Quality Results With The Perfecter

LIFT for added volume & movement



To Achieve This Look

1. On very short hair, start at crown and use the Perfecter just like a round brush. Roll a section and hold for 5 seconds for amazing lift.
2. After each section has been curled and lifted, add even more volume, by using the Perfecter to brush up from the root area over entire hair.
3. Even in the shortest areas, continue to roll and brush to enhance movement and direction, guiding hair up, forward, back to create any desired style.

WAVE & CURL your hairstyle to create a salon look at home



To Achieve This Look

1. On shoulder length, straight fine hair, start with bang area and use the Perfecter to roll the section back, and hold for 5 seconds.
2. Perfecter should be held vertically as you roll each section of the hair moving towards the back. Use other hand to guide the hair through the teeth and onto the barrel creating the perfect amount of curl desired.
3. Break up curls with your fingers for a natural, lightly curled style.

fusion Hair Styler

Frizzy hair to SMOOTH & SLEEK



To Achieve This Look

1. To smooth the thickest, curliest hair, create sections starting at the back nape of the hair. Use clips to clip away hair, leaving a one inch thick by two inch wide section of hair to smooth.
2. Place the Perfecter right onto scalp and give tension to the end hanging out. Keep tension on the held piece as you move the Perfecter slowly to the end. Place hand holding the tension directly onto the Perfecter to guide the ends through smoothly.
3. For extremely resistant hair repeat same motion a second time on each strand. Move section to section to finish hair.

Using both hands to create a FUN BOUNCY CURL

AFTER



BEFORE



To Achieve This Look

1. Safe and free from burning even the youngest of hands, to add quick and easy curls, start with a one inch thick-by two inch wide section of hair. Brush the Perfecter through the entire section first.
2. Using both hands guide a the section onto the barrel, bringing it all the way to the end, carefully wrap up only two rotations, hold for 7 seconds, release the roll out exactly as rolled in.
3. Complete by rolling all sections, and use fingers to finish the style.

fusion Hair Styler

FIX flat spots, cowlicks & flips



To Achieve This Look

1. To correct areas that cause challenges, such as flat spots, cowlicks and flips, take the challenging section, split the section if it's larger than one inch thick and two inches wide in as many sections necessary.
2. Place the Perfecter right to the scalp, slowly brush entire section once through, brush through second time and at the end use other hand to guide ends around teeth and roll down to scalp and hold for 7 seconds.
3. The more resistant the challenging spot is the smaller the section should be and repeat on the section a second time to fix the spot.

Brings dull damaged hair BACK TO LIFE

AFTER



BEFORE



To Achieve This Look

1. Dry, damaged hair will regain a healthier, smooth shiny appearance after one use of the Perfecter.
2. Perfecter must be used on each section of entire hair. Use clips to clip away hair, leaving a one inch thick by two inch wide section of hair. First brush through the section, roots to ends, very slowly, two to three times to restore its lustre and shine.
3. Last pass on the section, Perfecter should be held vertically as you curl each section of the using other hand to guide the hair through the teeth and onto the barrel creating the perfect amount of curl desired.

fusion Hair Styler

Frizzy coarse hair to STRAIGHT & CURLED

AFTER



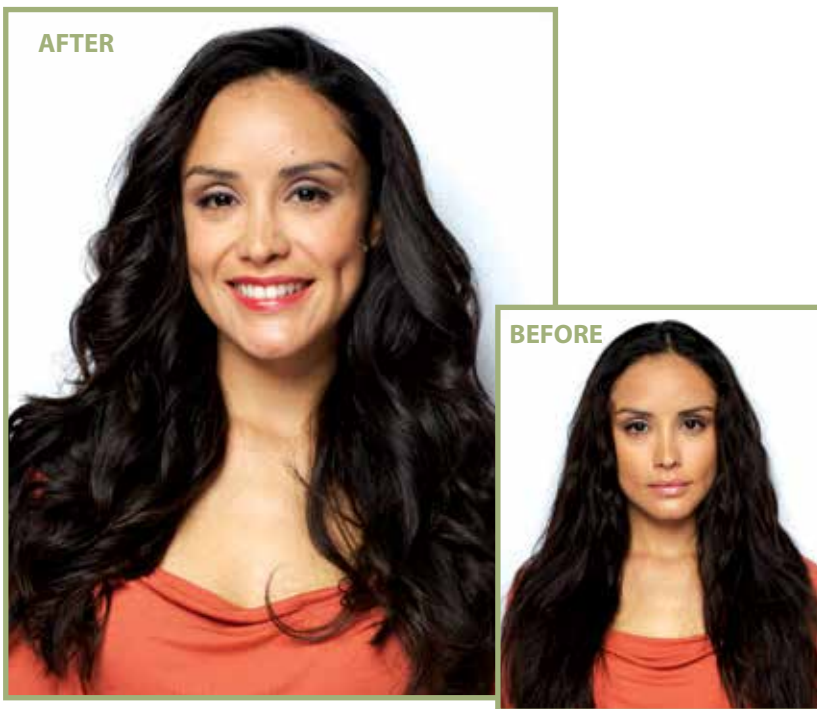
BEFORE



To Achieve This Look

1. To smooth and curl the thickest, curliest hair, create sections starting at the back nape of the hair. Use clips to clip away hair, leaving a one inch thick by two inch wide section of hair to smooth.
2. Place the Perfecter right onto scalp and give tension to the end hanging out. Keep tension on the held piece as you move the Perfecter slowly to the end. Place hand holding the tension directly onto the Perfecter to guide the ends through smoothly.
3. Use a second pass to roll the ends around the brush twice to add curl to the smoothed hair. Move section to section to finish hair.

Long unfinished hair becomes FULL & BOUNCY

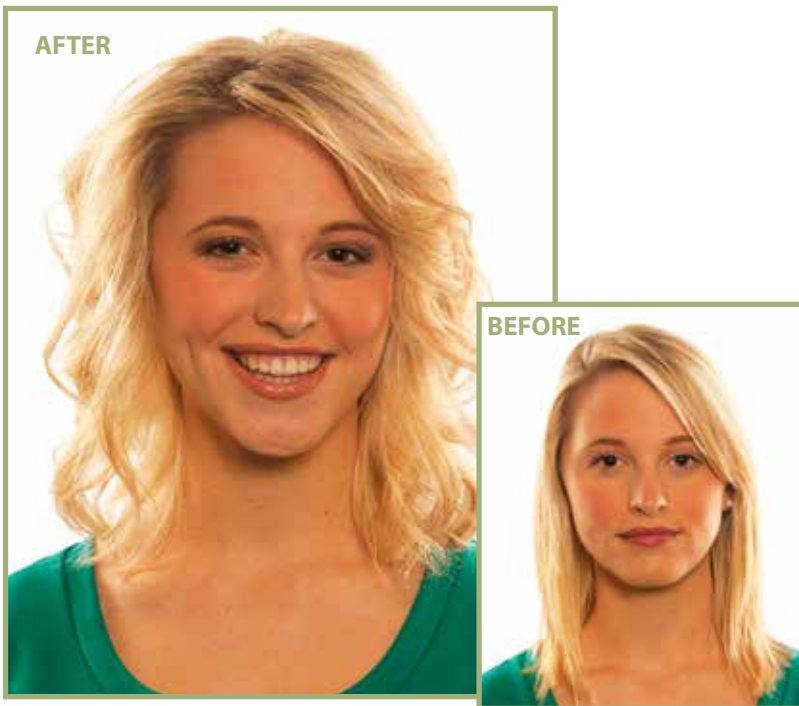


To Achieve This Look

1. To bring full & bouncy, salon style to unfinished looking hair, use the Twist and Curl Technique. Start by taking a one inch thick by two inch wide section in the front, right at the scalp, holding Perfecter in one hand and section of hair in the other.
2. Hold the Perfecter vertically and right at the scalp place the section onto the barrel. Start to rotate the barrel while guiding the section in. The motion is created by slowly moving barrel down and rotating at the same time. When tension is tight on curl release by softening pull on that section. The hair will be making a tornado looking twist as you move completely through the section till hair releases completely from barrel.
3. Twist and Curl Technique may take practice, but is very simple, quick and easy, creating curls that are more soft, bouncy and fuller than any other hair tool. Once mastered the amount of curl achieved is endless.

fusion Hair Styler

**Even fine hair gets incredible
BODY & TEXTURE**



To Achieve This Look

1. To create incredible looks that last on the finest hair, is possible by starting with bang area and using the Perfecter to curl each section using the Twist and Curl Technique. Start by taking a one inch thick by two inch wide section in the front, right at the scalp, holding Perfecter in one hand and section of hair in the other.
2. Hold the Perfecter vertically and right at the scalp place the section onto the barrel. Start to rotate the barrel while guiding the section in. The motion is created by slowly moving barrel down and rotating at the same time. When tension is tight on curl release by softening pull on that section. The hair will be making a tornado looking twist as you move completely through the section till hair releases completely from barrel.
3. Twist and Curl Technique may take practice, but is very simple, quick and easy, creating curls that are more soft, bouncy and fuller than any other hair tool. Once mastered the amount of curl achieved is endless.

Perfecter Fusion Styler brought to you
by Calista Tools, a company committed to
nourishing and strengthening hair with style.



Read All Instructions Before Use.
Learn more ways to style your hair at calistatools.com

© 2013 Calista Tools, LLC. All right reserved.
Distributed by Tristar Products, Inc., Fairfield, NJ 07004
973-287-5100